



Pyramid Healthcare
AN INTEGRATED BEHAVIORAL HEALTHCARE SYSTEM

2021-2022
ANNUAL REPORT

A WORD FROM THE CEO

“The march toward an improved and robust behavioral health treatment industry will endure.”

Since I began managing behavioral healthcare treatment facilities in 1984, much has changed for the better. However, the most important progress has been painfully slow, particularly the realization by our nation’s citizens and leaders that the availability of quality behavioral healthcare services is one of the most vital components of our communities.

Necessary funding to develop and maintain effective behavioral health services, while still inadequate, has improved. Sub-standard payer rates have started to garner notice and are also improving. The opioid epidemic was certainly the tipping point. Addiction and overdose deaths have become one of the largest killers of our youth and adults, and are unquestionably our nation’s #1 public health problem, surpassed only by COVID-19. The COVID-19 pandemic exposed the fragility and vulnerability of our nation and its people from a behavioral health standpoint. It also exposed the lack of behavioral health services, brought on by years of neglect of our treatment system.

The march toward an improved and robust behavioral health treatment industry will endure. Pyramid Healthcare and its 18 affiliated companies are shining examples of the deep commitment of thousands of people who are dedicated to



bringing high-quality behavioral health services to more communities. I hope that you enjoy reading about some of the life-enhancing, life-affirming, life-saving efforts we have undertaken this year.

Jonathan Wolf
Founder and Chief Executive Officer

ABOUT US

Founded in 1999
18 partner providers
78 locations in 8 states
2,900+ employees
CARF accredited

BOARD OF DIRECTORS

Jonathan Wolf
Keith Farrow
Christopher Crosby
Linda Rosenberg, MSW
David Wennberg, MD

CORPORATE OFFICE

271 Lakemont Park Boulevard
Altoona, PA 16602

(814) 940-0407

pyramidhc.com



CONTENTS

- New Pyramid Healthcare Programs Branding & Website.....4
- New Veterans Program Launches in Dallas, PA5
- New Outpatient Program Opens in Easton, PA.....6
- Tapestry Opens First Residential Program in PA.....7
- Program Locations8
- New Program Opening Fall 2022 in Dayton, OH 10
- High Focus Centers Expands into GA & NC..... 11
- High Focus Centers Opens Program in Farmington, CT 12
- Outpatient Services Added in Newport News, VA..... 13
- Outpatient Program Expanded in California, MD 14

NEW PYRAMID HEALTHCARE PROGRAMS BRANDING & WEBSITE

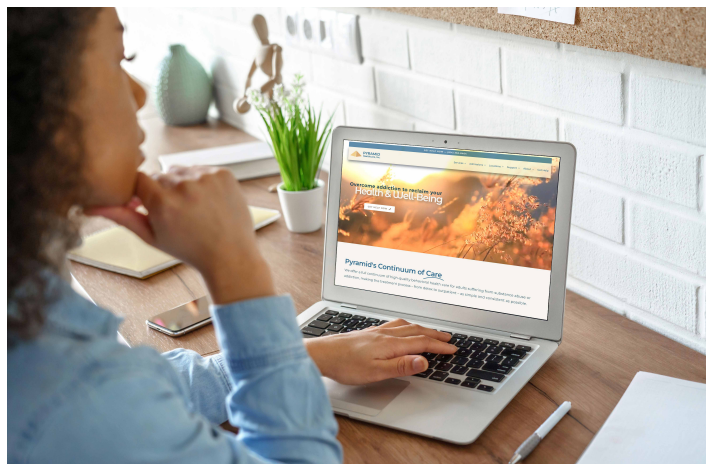
The Pyramid Healthcare, Inc. behavioral health treatment division launched a new logo and website representing the 30 program locations across Pennsylvania, Maryland, New Jersey, and Virginia to replace the previous logo and website established in May 2015.

The updated logo and redesigned website (pyramid-healthcare.com) both recognize and celebrate Pyramid Healthcare, Inc.'s demonstration of its core values in delivering high-quality, compassionate care.

“The characteristics of the newly updated digital identity and logo accurately reflect the significant progress, enhancements, and recognition Pyramid Healthcare, Inc. has experienced from both a treatment and visibility perspective over the last 7 years as we have evolved and grown into one of the leaders in the behavioral healthcare field.”

The website is designed to improve navigation, better convey the company's full continuum of care as well as help educate visitors on the services and treatment options available.

“The characteristics of the newly updated digital identity and logo accurately reflect the significant progress, enhancements, and recognition Pyramid Healthcare, Inc. has experienced from both a treatment and visibility perspective over the last seven years as we have



evolved and grown into one of the leaders in the behavioral healthcare field,” stated Jonathan Wolf, founder and CEO.

Pyramid Healthcare, Inc. continues to offer a full continuum of evidence-based mental health and substance use treatment programs, including withdrawal management, residential, outpatient, halfway housing, and Medication Assisted Treatment (MAT) for adults and adolescents in four eastern states.

These changes include an extensive resource for referral sources and the public alike. The newly updated website, LinkedIn, Facebook, and Instagram pages also speak to Pyramid Healthcare, Inc.'s core values, commitment to serving individuals at all stages of recovery, and mission of creating solutions for individuals and families that result in positive growth and a better quality of life since the company's founding in 1999.



OUR MISSION

Creating solutions for individuals and families that result in positive growth and a better quality of life.

OUR CORE VALUES

Integrity
Dedication
Collaboration
Passion

OUR VISION

A system of treatment in behavioral healthcare with groundbreaking results in the treatment of adults, children and families.



NEW VETERANS PROGRAM LAUNCHES IN DALLAS, PA

One of the foundational goals at Pyramid Healthcare is to identify human service needs to create solutions for a better quality of life for those impacted. Few populations are more vulnerable and at risk for behavioral health challenges than military veterans.

According to the National Institute on Drug Abuse, 11% of veterans seeking services within the Department of Veterans Affairs (VA) system are diagnosed with a substance use disorder, with 63% of those individuals also suffering from post-traumatic stress disorder or other co-occurring mental health conditions. Additionally, researchers estimate that up to half of Iraq and Afghanistan veterans suffer from mental illness. When coupled with widespread homelessness, a high prevalence of traumatic brain injury, and an increased need for pain management, it's clear that the population as a whole needs comprehensive support.



Inpatient Treatment Program in Dallas, PA

Many hospitals within the VA network offer on-site behavioral health treatment programs. While these are acceptable options, veterans often have unique healthcare needs and comorbidities requiring specialized treatment services. Additionally, VA programs frequently operate on wait lists and may be far from the rural areas where many veterans reside. As a result, in 2018, Congress passed The Mission Act recognizing the need for an integrated external network of providers to complement the VA's internal network. This external network became known as the Community Care Network, or VA-CCN.

As a national leader in providing integrated solutions for complex behavioral healthcare challenges, Pyramid Healthcare saw an opportunity to step up and design a program to help.

With 4.5 million veterans living in the states where Pyramid Healthcare operates, the organization is uniquely qualified to provide care that addresses a variety of treatment needs close to home and at multiple levels of care. Pyramid Healthcare currently has 40 locations that are a part of the VA-Community Care Network.

Pyramid Military Therapy & Recovery Programs

In early 2022, a team of customer service, call center, operations, and clinical leaders began working to create a specialized program that would provide additional engagement to VA stakeholders, streamlined access to care, and a clinical curriculum that would genuinely address the full spectrum of complex behavioral health needs present in the veteran population. In August 2022, Pyramid Military Therapy & Recovery Programs opened at its first location in Dallas, PA, along with a new brand and website (pyramidmil.com) to reflect the clinical quality and uniqueness of the program.



Veterans entering the program are offered a process-based approach, leveraging aspects of various evidence-based treatment modalities, including Acceptance and Commitment Therapy (ACT) and Dialectical Behavior Therapy (DBT). Initially, programming focuses on stabilizing symptoms, including withdrawal management services as necessary. The ultimate goal, however, is to work with clients to uncover and reframe underlying themes causing substance use or psychiatric symptoms, which are often trauma-related. This approach is transdiagnostic, and Pyramid Healthcare hopes to make it available at other substance use, mental health, and eating disorder programs throughout the continuum.

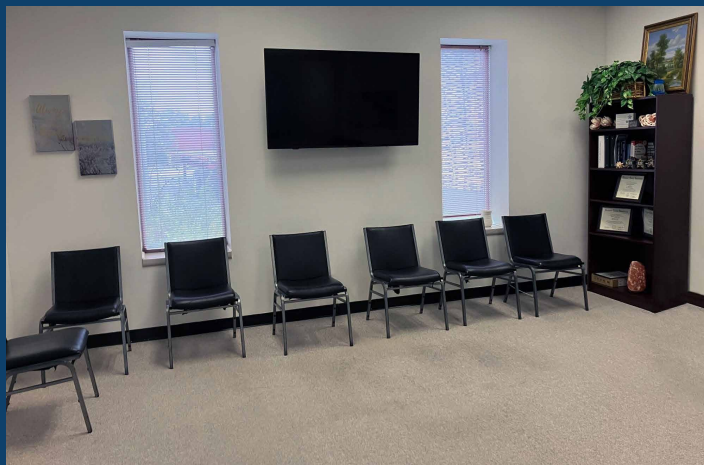


NEW OUTPATIENT PROGRAM OPENS IN EASTON, PA

The Single County Authority of Northampton County asked Pyramid Healthcare to consider establishing an outpatient behavioral health treatment program to fulfill an unmet need in the Easton, Pennsylvania, area. Through due diligence and collaboration with the Client Navigation team, Pyramid Healthcare realized that expanding services in Easton would further the mission of providing quality care in the communities served. Pyramid Healthcare had previously contracted with Northampton County, PA, in 2018 to provide services out of the Bartonsville location.

adult and adolescent outpatient treatment, and individual therapy. In addition, medication-assisted treatment and partial hospitalization programming will be available in the near future.

The recent opening of the Easton outpatient program represents a commitment to Pyramid Healthcare’s core values, particularly collaboration. Pyramid Healthcare’s talented professionals are dedicated to providing quality care to residents of Easton and the Northampton County area. The team believes that the bravest thing a person can do is ask for help, and they are ready to join



2906 William Penn Highway, Suite 403, Gate 2
Easton, PA 18042



them in that journey by providing quick access to treatment in a welcoming environment.

Pyramid Healthcare’s new location in Easton marks the company’s 12th outpatient behavioral health treatment program in Pennsylvania. At this facility, clients can access scheduled drug and alcohol assessments, adult intensive outpatient treatment,



PYRAMID
Healthcare, Inc.

Pyramid Healthcare is honored to partner with the county and provide services to meet the needs of its residents.

PENNSYLVANIA OUTPATIENT LOCATIONS

Allentown	Easton
Altoona	Erie
Bartonsville	Pittsburgh
Butler	Waynesboro
Chambersburg	York

PENNSYLVANIA INPATIENT LOCATIONS

Altoona	Gibsonia
Bellefonte	Langhorne
Catasauqua	Pittsburgh
Dallas	Quakertown
East Stroudsburg	York

PENNSYLVANIA SPECIALTY PROGRAMS

- Halfway Houses
- Medication Assisted Treatment
- Military Program
- Centers of Excellence
- Trauma-Informed
- Criminal Justice
- Recovery Houses



TAPESTRY OPENS FIRST RESIDENTIAL PROGRAM IN PA

Tapestry launched a residential mental health treatment program for adult women in Moscow, PA, in March 2022. This opening marks Tapestry’s first location in northeastern PA, which joins the brand’s portfolio of three additional locations in Brevard, Fletcher, and Asheville, NC.

Conveniently located in the Pocono Mountains, Tapestry’s new location serves clients in eastern PA and the surrounding areas seeking a higher level of premier mental health care, further building on the existing brand’s solid reputation in North Carolina.

with depression, anxiety, adjustment disorder, eating disorders, bipolar disorder, co-occurring substance use, and trauma.



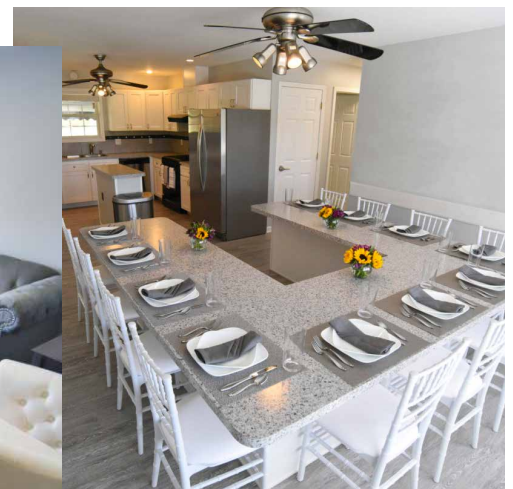
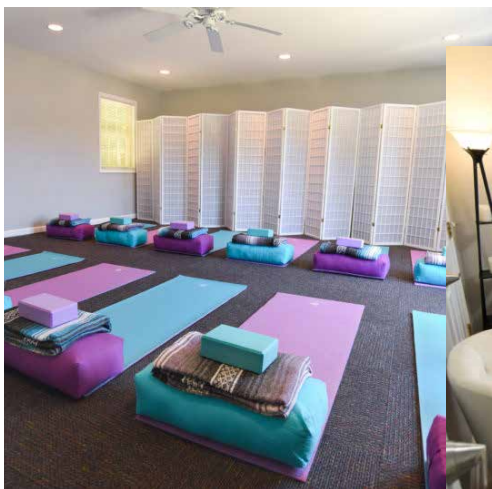
The unique, individualized treatment program’s evidence-based approach consists of process groups, individual and family therapy, psychoeducation, pharmacotherapy, nutritional support, and holistic/experimental modalities. Clinical treatment is based on Acceptance and Commitment Therapy (ACT) and incorporates trauma-informed care, Motivational Interviewing (MI), Emotion-Focused Family Therapy (EFFT), and Dialectical Behavior Therapy (DBT).

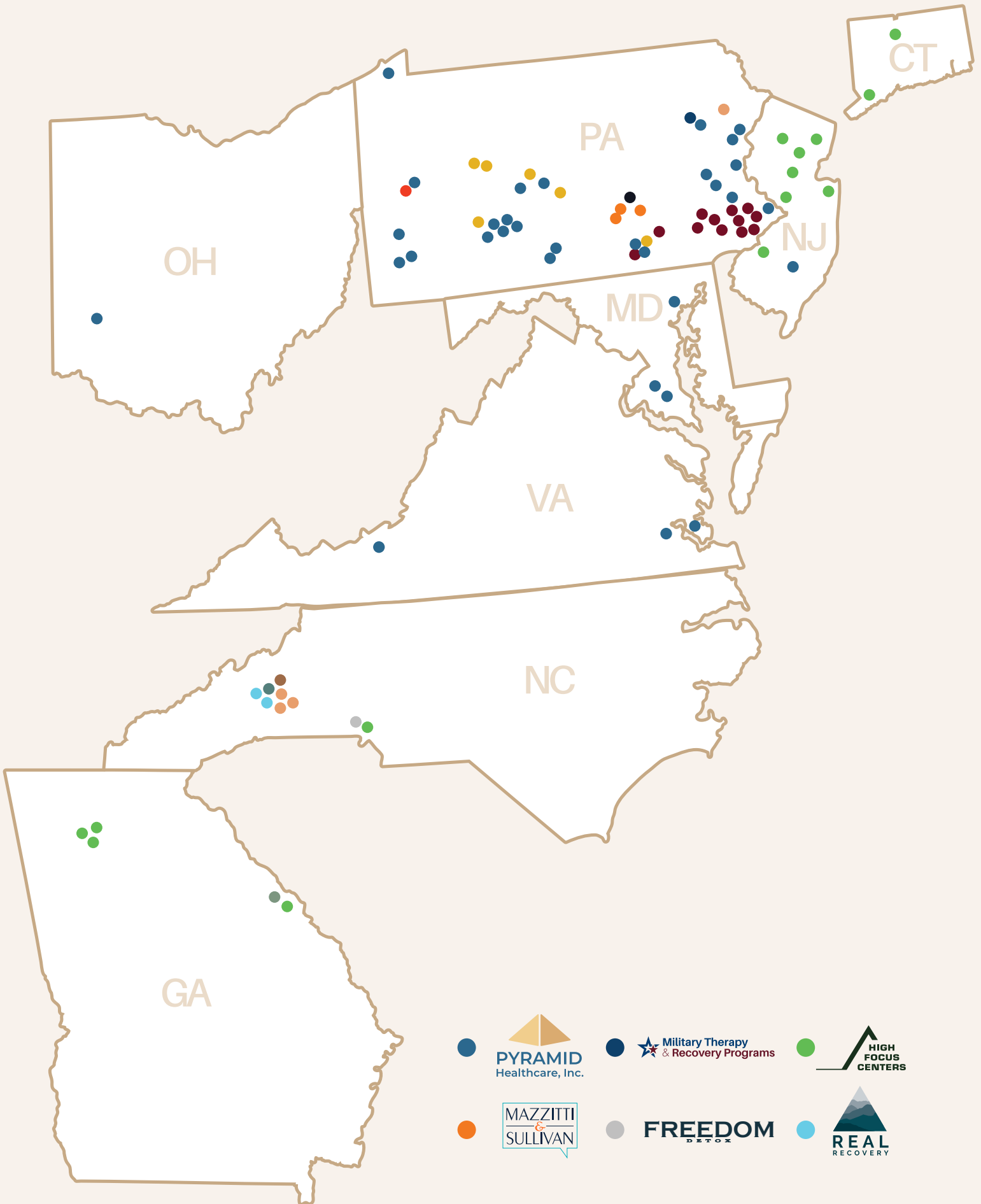
At Tapestry Poconos, adult female clients have access to residential treatment for mental health and eating disorders in a therapeutic, home-like environment. The Tapestry Poconos team strives to positively impact the lives of women struggling

The program is located at 272 Hamlin Highway, Moscow, PA 18444.



Tapestry





 PYRAMID Healthcare, Inc.	 Military Therapy & Recovery Programs	 HIGH FOCUS CENTERS
 MAZZITTI & SULLIVAN	 FREEDOM DETOX	 REAL RECOVERY



Pyramid Healthcare

AN INTEGRATED BEHAVIORAL HEALTHCARE SYSTEM

Program Locations

A Leader in Client-Focused Care

Pyramid Healthcare is dedicated to offering the highest quality of care to those served. Client-focused care establishes Pyramid Healthcare’s family of brands as respected leaders in substance use treatment, mental health recovery, autism, and eating disorder modalities.

Locations

Founded in 1999 and headquartered in Altoona, PA, Pyramid Healthcare’s integrated behavioral healthcare system of 18 companies employs over 2,900 team members and operates 78 program locations and schools across eight eastern states.

Staff

From **detox to outpatient treatment** and all levels of care in between, Pyramid Healthcare’s licensed and experienced clinicians are passionate about providing personalized, effective, life-changing care every day.

Treatment

Pyramid Healthcare’s full continuum of **in-person and telehealth** behavioral healthcare education programs and specialty services for **adults and adolescents** includes **mental health, substance use, and eating disorders treatment for ages ten and up.**





NEW PROGRAM OPENING FALL 2022 IN DAYTON, OH

Outpatient mental health and substance use treatment plays a large part in Pyramid Healthcare’s development plans, primarily because of the significant need for these services across the country. After years of lockdowns, stress, and societal upheaval caused by the COVID-19 pandemic, Pyramid Healthcare has become even more aware of the acute demand for both mental health and substance use services nationwide.

As a result, Pyramid Healthcare has accelerated plans to establish outpatient clinics throughout the eastern United States to meet this ever-growing demand. The opening of the Dayton, OH location in December 2022 will serve as an example of Pyramid Healthcare’s commitment to expand into new markets and offer behavioral healthcare to more underserved communities.

At the Dayton location, adult clients with mental health disorders will have access to partial hospitalization and intensive outpatient programming, as well as psychiatry and medication management and comprehensive case management.

Ambulatory detox, partial hospitalization and intensive outpatient programming, medication-assisted treatment (including for opioid use disorder), case management, and peer recovery support will be available for adult clients with substance use disorders.

Ohio marks the eighth state in which the Pyramid Healthcare family of brands operates. Currently, the Pyramid Healthcare brand offers outpatient programming in four states: Maryland, New Jersey, Pennsylvania, and Virginia. Pyramid Healthcare is excited to bring its best-in-class services to Ohio. The dynamics in Ohio are favorable for Pyramid Healthcare to enter the state and serve the community’s needs. At the same time, economic factors allow for a sustainable business model where staff can flourish.

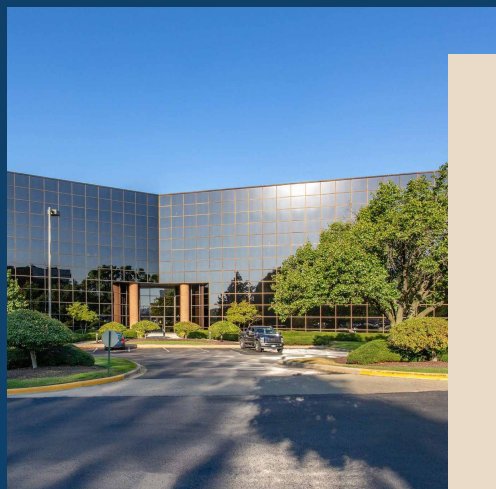
Pyramid Healthcare has spent months building relationships with community stakeholders and systems internally to ensure the success of this program. By strategically hiring individuals with Ohio market expertise, Pyramid Healthcare supports the steady and effective growth of this program to meet the needs of the Dayton area. In addition, other potential future Pyramid Healthcare locations have been identified throughout the state of Ohio.

Pyramid Healthcare looks forward to seeing the positive impact the Dayton outpatient program will have on the local community.

The new facility is located at 3055 Kettering Blvd, Ste. 101, Moraine, OH 45439.

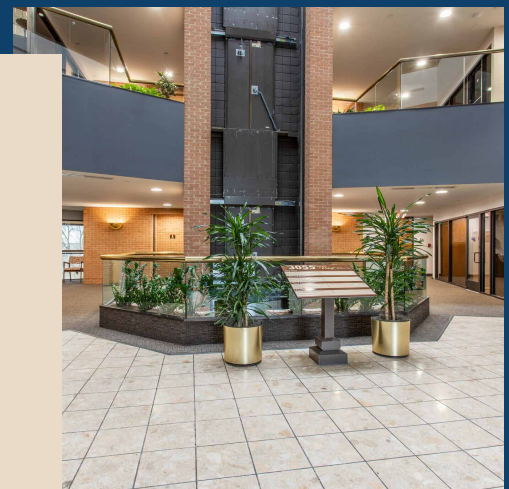


PYRAMID
Healthcare, Inc.



**OHIO
ADULT OUTPATIENT
TREATMENT**

- Mental Health
- Substance Use
- Partial Hospitalization Program
- Intensive Outpatient Program
- Psychiatry & Medication Management
- Peer Recovery Support
- Case Management





HIGH FOCUS CENTERS EXPANDS INTO GA & NC

In early 2022, Pyramid Healthcare’s High Focus Centers brand entered the southeastern United States. High Focus Centers now offers services for adults and adolescents in Georgia and North Carolina.

The existing Pyramid Family Behavioral Healthcare programs in Sandy Springs and Johns Creek, GA, along with the current October Road location in Charlotte, NC, have rebranded as High Focus Centers. In addition, the recently acquired Atlanta Addiction Recovery Center in Marietta, GA, and RiverMend Health Centers in Augusta, GA, have also been incorporated into the High Focus Centers system. These rebrandings have expanded the High Focus Centers system to include 14 outpatient program locations across the states of New Jersey, Connecticut, Georgia, and North Carolina.



High Focus Centers Outpatient Treatment Program in Charlotte, North Carolina

A premier provider of mental health and substance use treatment for more than 25 years, High Focus Centers offers in-person and telehealth structured outpatient programming for adults and adolescents diagnosed with depression, bipolar disorder, anxiety, addiction, co-occurring diagnoses, and more.

At High Focus Centers, clients experience a multi-modal, evidence-based approach across multiple levels of care, including partial hospitalization programs (PHP), intensive outpatient programs (IOP), and outpatient programs (OP). Clinical treatment at High Focus Centers integrates Dialectical Behavior Therapy (DBT), Cognitive Behavior Therapy (CBT), and Acceptance and Commitment Therapy (ACT), as well as trauma-informed care and Motivational Interviewing (MI).

In 2021, Pyramid Healthcare made its 14th acquisition in a decade: a well-established commercial residential treatment center for adults based in Augusta, GA, known as The Bluff. The Bluff’s residential substance use treatment program links with High Focus Centers’ structured outpatient spectrum, further strengthening Pyramid Healthcare’s integrated behavioral healthcare system. In addition, Freedom Detox, another Pyramid Healthcare brand based in Gastonia, near Charlotte, NC, also effectively and efficiently steps down clients into the High Focus Centers outpatient network.



High Focus Centers Outpatient Treatment Program in Sandy Springs, Georgia

Pyramid Healthcare plans to further expand and enhance the High Focus Centers system in the coming year. The Augusta outpatient program relocated to a new, expanded space in nearby Evans, GA. High Focus Centers will offer the full spectrum of mental health, substance use, and dual diagnosis treatment for adults and adolescents at this location. Additionally, the Marietta program will relocate to the Kennesaw area of North Atlanta, offering the same full spectrum of services. Finally, plans to open two additional full-service High Focus Centers commercial outpatient facilities in Peachtree City and the Midtown area of Atlanta are ongoing.





HIGH FOCUS CENTERS OPENS PROGRAM IN FARMINGTON, CT

High Focus Centers expanded its services in Connecticut with an additional location in Farmington, providing high-quality outpatient treatment for mental health, substance use, and co-occurring disorders to the residents of Hartford County. This opening marks High Focus Centers' second outpatient program in the state after Norwalk.



The Farmington program currently accepts male and female adolescents aged 13 to 17 with a mental health disorder, substance use disorder, or a dual diagnosis. Adult mental health treatment will also be available at this facility soon.

The experienced clinical team at the Farmington program utilizes therapeutic models and two levels of structured outpatient services. These services include partial hospitalization and intensive outpatient programs specifically designed to help teens address depression, anxiety, and self-harm, as well as other mental health conditions, substance use, and co-occurring disorders.



The outpatient treatment program is located at 17 Talcott Notch Road, 2nd Floor, Farmington, CT 06032.



NORTHEASTERN LOCATIONS

Branchburg, NJ Paramus, NJ
Cherry Hill, NJ Parsippany, NJ
Cranford, NJ Norwalk, CT
Freehold, NJ Farmington, CT
Lawrenceville, NJ

ADULT & ADOLESCENT OUTPATIENT TREATMENT

Mental Health
Co-Occurring
Substance Use
Partial Hospitalization Program
Intensive Outpatient Program
Trauma-Enhanced IOP
LGBTQ+ Track

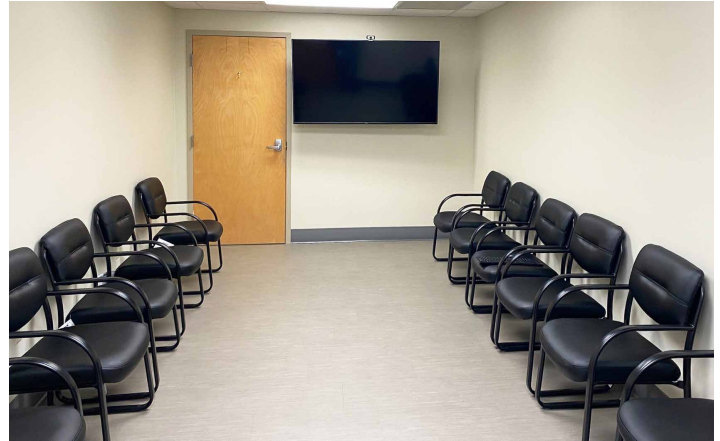
SOUTHEASTERN LOCATIONS

Evans, GA
Johns Creek, GA
Marietta, GA
Sandy Springs, GA
Charlotte, NC



OUTPATIENT SERVICES ADDED IN NEWPORT NEWS, VA

In 2021, Pyramid Healthcare opened its first facility in the state of Virginia. The Detox and Inpatient Treatment Center in Newport News brings individualized, medically supervised treatment in a non-hospital environment to adults with substance use disorder who reside across the Virginia Peninsula, including the Tidewater region and Hampton Roads.



Joint Commission’s Gold Seal of Approval® for Behavioral Health Care and Human Services on August 5, 2021.

Initially, the Pyramid Healthcare Newport News facility had a capacity of 88 detox/residential beds, with plans to expand to serve up to 120 inpatient clients by 2023. In 2022, intensive outpatient and outpatient services also became available at the Newport News location.

This expansion into the state of Virginia emphasizes Pyramid Healthcare’s continued commitment to the role of a client-centered community advocate and collaborator, removing barriers to treatment access for underserved populations.



The new Pyramid Healthcare Detox and Inpatient Treatment Center in Newport News, VA, brings sorely needed treatment services to the underserved populations in the state.

The opioid crisis is especially acute in Virginia, where an average of four residents died of an overdose every day in 2020. Pyramid Healthcare is proud to partner with the local Newport News community to provide these critically needed services to its residents. The program in Newport News earned The

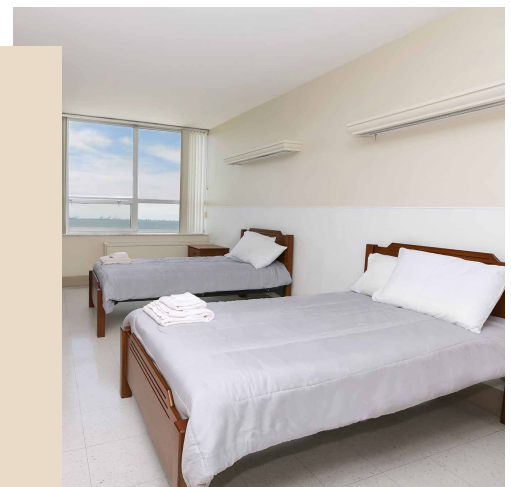
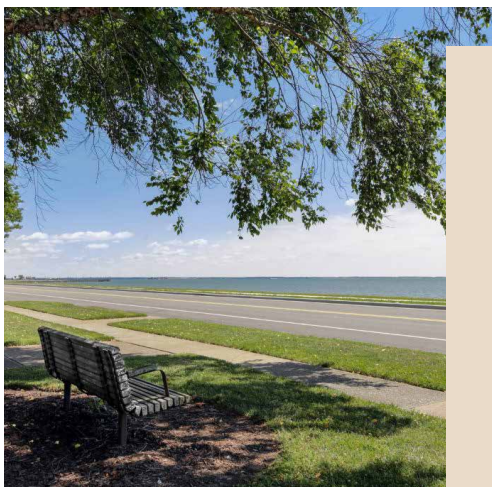
This program is located at 245 Chesapeake Avenue, Newport News, VA 23607.



PYRAMID
Healthcare, Inc.

VIRGINIA ADULT INPATIENT & OUTPATIENT TREATMENT

- Substance Use
- Co-Occurring
- Partial Hospitalization Program
- Intensive Outpatient Program
- Peer Recovery Support
- Case Management





OUTPATIENT PROGRAM EXPANDED IN CALIFORNIA, MD

In Maryland, existing Walden treatment programs have merged with Pyramid Healthcare locations. The unification of Walden and Pyramid Healthcare expands the Pyramid Healthcare brand to represent 30 program locations across Pennsylvania, Maryland, New Jersey, and Virginia.

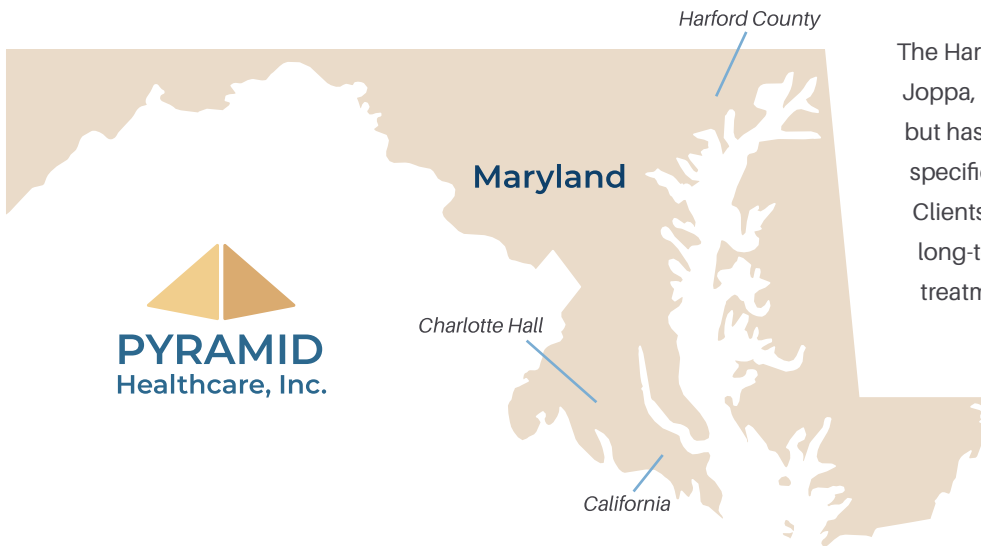
By rebranding the Walden program and merging it with Pyramid Healthcare's nationwide network of behavioral healthcare facilities, high-quality behavioral healthcare services are more effectively integrated throughout the system.

In total, Pyramid Healthcare now offers three treatment locations in northern Harford County and across southern Maryland. As recent statistics show that the number of overdose deaths in the state is double the national average, Pyramid Healthcare's teams are eager to meet unmet treatment needs and remove barriers to care in Maryland.

Pyramid Healthcare's adult outpatient treatment program in Lexington Park, MD, relocated to an expanded location in California, MD. The multi-building campus in California is one of Pyramid Healthcare's largest outpatient substance use and co-occurring mental health treatment centers, offering the residents of southern Maryland enhanced access to a full continuum of treatment options at a single location.

Services at the California facility include medication-assisted treatment (MAT), withdrawal management, and substance use and dual diagnosis treatment programs for adult clients.

To further meet the needs of individuals with behavioral health challenges in Maryland, Pyramid Healthcare has also expanded the Harford County and Charlotte Hall, MD, locations to include more residential and detox beds. Additionally, the establishment of a new treatment facility in Bowie, MD, is underway.



The Harford Residential & Detox facility, located in Joppa, MD, was historically a male-only program but has expanded its offerings to include gender-specific programming for both men and women. Clients can benefit from detox, short- and long-term inpatient substance use treatment, treatment for co-occurring disorders, and MAT at this location.





pyramidhc.com | (814) 940-0407